

EVERGRENE P.C.D. PLAT FOUR

A REPLAT OF TRACT F-3, EVERGRENE PLAT TWO AS RECORDED IN PLAT BOOK 95, PAGES 29 THROUGH 54 INCLUSIVE, PUBLIC RECORDS OF PALM BEACH COUNTY, FLORIDA LYING IN THE SOUTHWEST QUARTER OF SECTION 25, TOWNSHIP 41 SOUTH, RANGE 42 EAST, CITY OF PALM BEACH GARDENS, PALM BEACH COUNTY, FLORIDA
SHEET No.3 OF 4 DECEMBER 2002

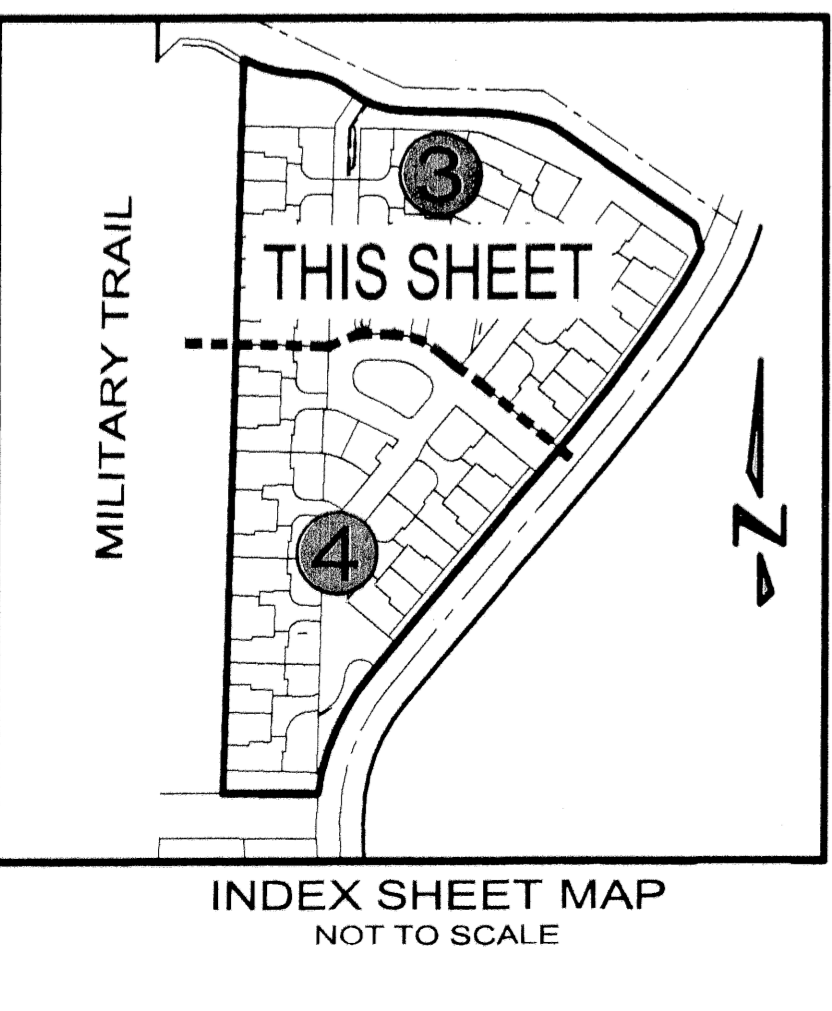
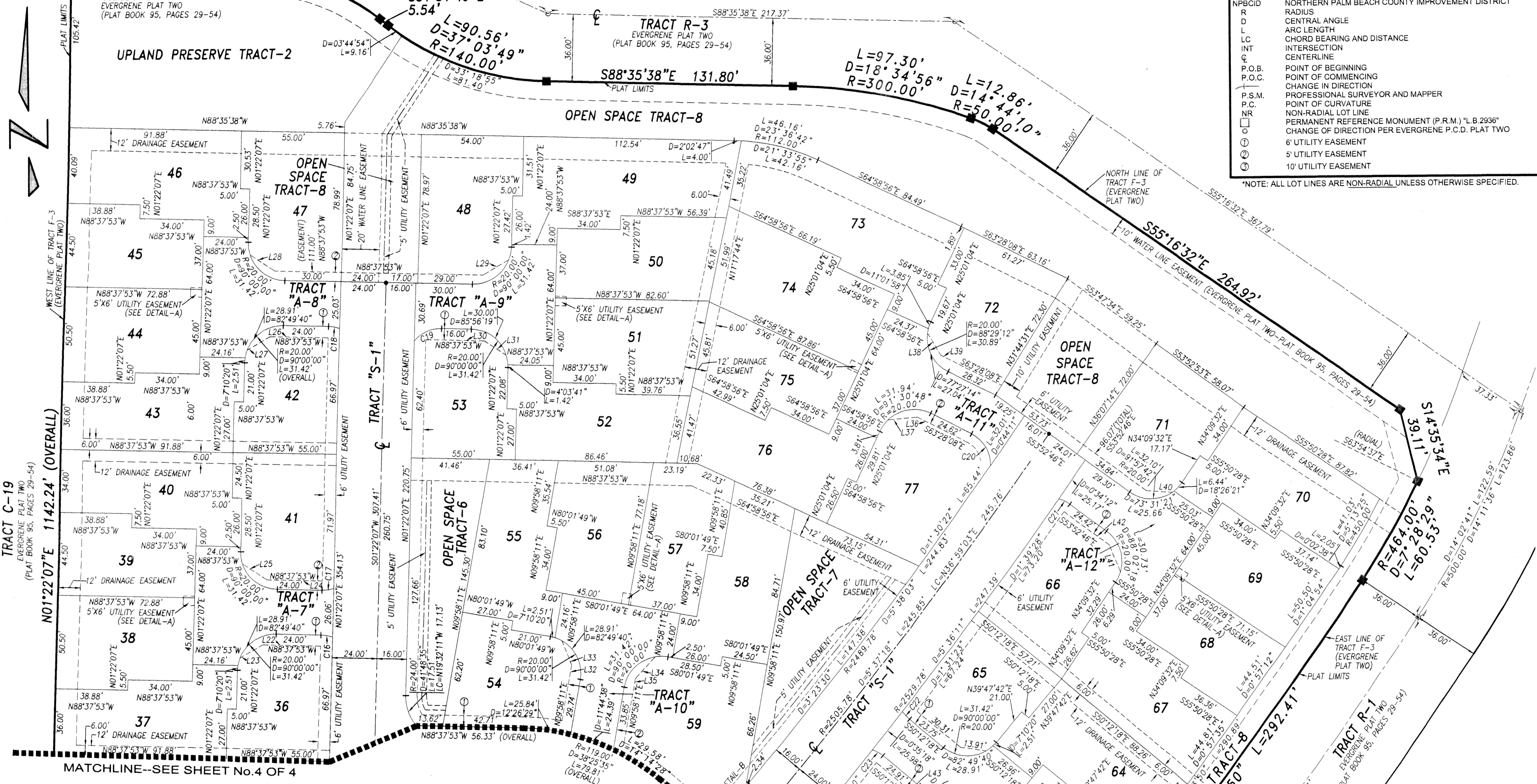
SYMBOLS LEGEND

- SET PERMANENT REFERENCE MONUMENT (P.R.M.) "L.B.4897"
- PERMANENT CONTROL POINT (P.C.P.)
- NPBCID NORTHERN PALM BEACH COUNTY IMPROVEMENT DISTRICT
- R RADIUS
- D CENTRAL ANGLE
- L ARC LENGTH
- LC CHORD BEARING AND DISTANCE
- INT INTERSECTION
- C CENTERLINE
- P.O.B. POINT OF BEGINNING
- P.O.C. POINT OF COMMENCING
- CHANGE IN DIRECTION
- P.S.M. PROFESSIONAL SURVEYOR AND MAPPER
- P.C. POINT OF CURVATURE
- NR NON-RADIAL LOT LINE
- PERMANENT REFERENCE MONUMENT (P.R.M.) "L.B.2936"
- CHANGE OF DIRECTION PER EVERGRENE P.C.D. PLAT TWO
- ① 6' UTILITY EASEMENT
- ② 5' UTILITY EASEMENT
- ③ 10' UTILITY EASEMENT

*NOTE: ALL LOT LINES ARE NON-RADIAL UNLESS OTHERWISE SPECIFIED.

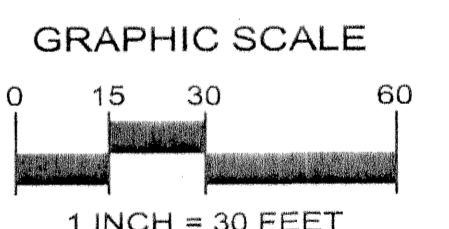
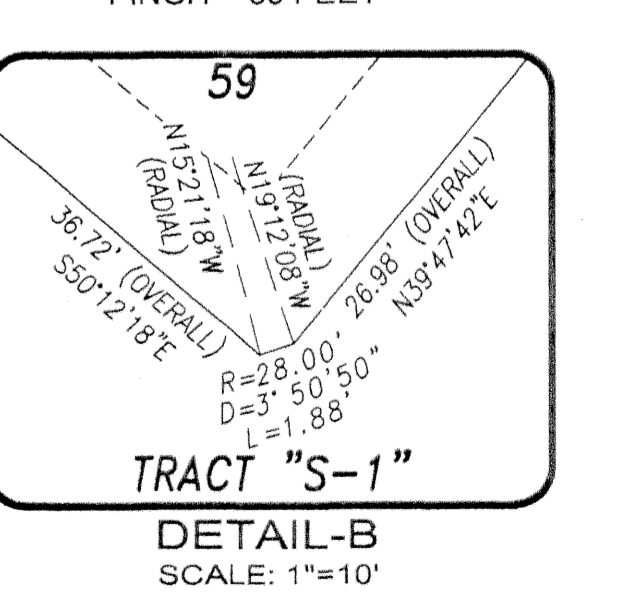
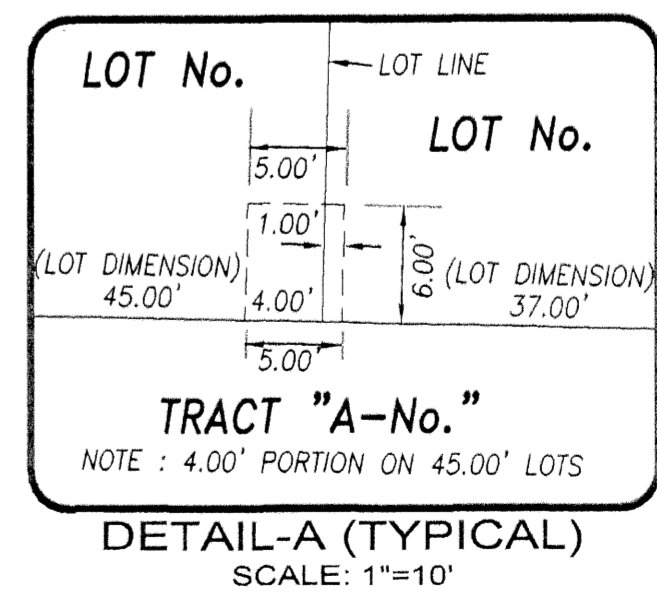
CURVE TABLE

| CURVE | LENGTH | RADIUS | DELTA | CHORD BEARING | CHORD LENGTH |
|-------|--------|---------|-----------|---------------|--------------|
| C1 | 6.30' | 18.00' | 20°02'59" | N78°36'23"W | 6.27' |
| C2 | 6.30' | 18.00' | 20°02'59" | N81°20'37"E | 6.27' |
| C3 | 3.31' | 4.33' | 43°48'47" | N66°43'29"W | 3.23' |
| C4 | 3.31' | 4.33' | 43°48'47" | N69°27'43"E | 3.23' |
| C5 | 3.31' | 4.33' | 43°48'47" | N66°43'29"W | 3.23' |
| C6 | 3.31' | 4.33' | 43°48'47" | N69°27'43"E | 3.23' |
| C7 | 1.53' | 185.00' | 0°28'39" | N88°23'38"W | 1.53' |
| C8 | 6.87' | 185.00' | 2°07'39" | N88°34'03"W | 6.87' |
| C9 | 12.47' | 185.00' | 3°51'42" | N84°34'23"W | 12.47' |
| C10 | 6.12' | 18.00' | 19°28'16" | N81°37'59"E | 6.09' |
| C11 | 3.90' | 50.00' | 4°28'21" | S03°36'18"W | 3.90' |
| C12 | 29.63' | 50.00' | 33°57'14" | S22°49'05"W | 29.20' |
| C13 | 27.61' | 18.00' | 8°52'28" | S85°51'28"W | 24.98' |
| C14 | 13.49' | 90.00' | 8°35'23" | S35°30'01"W | 13.48' |
| C15 | 13.14' | 18.00' | 41°48'37" | S29°17'59"E | 12.85' |
| C16 | 6.12' | 18.00' | 19°28'16" | N78°53'45"W | 6.09' |
| C17 | 6.12' | 18.00' | 19°28'16" | N81°37'59"E | 6.09' |
| C18 | 6.12' | 18.00' | 19°28'16" | N78°53'45"W | 6.09' |
| C19 | 16.04' | 18.00' | 51°03'27" | S65°50'23"W | 15.51' |
| C20 | 20.98' | 18.00' | 66°46'05" | N30°05'06"W | 19.81' |
| C21 | 6.48' | 18.00' | 20°38'17" | N64°11'54"W | 6.45' |
| C22 | 5.47' | 18.00' | 17°25'37" | S41°29'30"E | 5.42' |
| C23 | 6.45' | 18.00' | 20°32'35" | N60°28'35"W | 6.42' |
| C24 | 6.01' | 18.00' | 19°08'45" | S59°46'41"E | 5.99' |
| C25 | 16.08' | 18.00' | 51°10'44" | N75°47'40"W | 15.55' |
| C26 | 14.69' | 36.13' | 23°17'54" | N28°08'45"E | 14.59' |
| C27 | 14.69' | 36.13' | 23°17'54" | S28°08'45"W | 14.59' |
| C28 | 15.01' | 27.85' | 30°52'24" | N24°21'30"E | 14.83' |
| C29 | 15.01' | 27.85' | 30°52'24" | S24°21'30"W | 14.83' |
| C30 | 37.77' | 95.00' | 22°46'56" | N53°34'47"W | 37.53' |
| C31 | 12.25' | 95.00' | 7°23'20" | N68°39'55"W | 12.24' |
| C32 | 51.47' | 40.00' | 73°43'42" | S35°29'44"E | 47.99' |
| C33 | 31.42' | 20.00' | 90°00'00" | N05°12'18"W | 28.28' |
| C34 | 49.63' | 74.00' | 38°25'35" | N69°25'06"W | 48.70' |
| C35 | 28.27' | 18.00' | 90°00'00" | S46°22'07"W | 25.46' |
| C36 | 12.12' | 9.00' | 77°11'19" | S37°13'33"E | 11.23' |
| C37 | 22.91' | 121.00' | 14°59'42" | N70°23'44"W | 22.88' |
| C38 | 31.67' | 121.00' | 14°59'42" | N57°28'24"W | 31.58' |
| C39 | 16.19' | 18.00' | 51°32'55" | N24°25'50"W | 15.65' |
| C40 | 10.32' | 12.00' | 49°17'30" | N25°33'33"W | 10.01' |



LINE TABLE

| LINE | LENGTH | BEARING |
|------|--------|-------------|
| L1 | 13.91' | N59°43'19"E |
| L2 | 30.83' | S88°37'53"E |
| L3 | 15.72' | S56°45'01"E |
| L4 | 29.33' | S88°37'53"E |
| L5 | 13.91' | N59°43'19"E |
| L6 | 25.27' | S88°37'53"E |
| L7 | 15.72' | S56°45'01"E |
| L8 | 29.33' | S88°37'53"E |
| L9 | 13.91' | N59°43'19"E |
| L10 | 46.66' | S88°37'53"E |
| L11 | 15.72' | S56°45'01"E |
| L12 | 29.50' | S88°37'53"E |
| L13 | 15.72' | N18°19'26"W |
| L14 | 22.81' | N50°12'18"W |
| L15 | 13.91' | N81°51'06"W |
| L16 | 32.22' | N50°12'18"W |
| L17 | 10.49' | N01°22'07"E |
| L18 | 36.02' | S39°47'42"W |
| L19 | 1.74' | N50°12'18"W |
| L20 | 38.44' | S88°37'53"E |
| L21 | 31.55' | S64°58'15"E |
| L22 | 31.00' | S88°37'53"E |
| L23 | 13.91' | N59°43'19"E |
| L24 | 29.50' | S88°37'53"E |



Keshavarz & Associates, Inc.
CONSULTING ENGINEERS - SURVEYORS
1280 N. Congress Avenue, Suite 206
West Palm Beach, Florida 33409
Tel: (561) 689-8600 Fax: (561) 689-7476 LB 4897
THIS INSTRUMENT WAS PREPARED BY MANUELL A. GUTIERREZ, PSM
PROFESSIONAL SURVEYOR AND MAPPER NO. LS 4102
IN THE OFFICES OF KESHAVARZ & ASSOCIATES, INC.
L:\A\25107490\7490_Plat_000_11/25/02_09:37:01 AM.dwg